



GOOD MORNING  
Have Good Trading Day

FRIDAY



Price is what you pay.  
Value is what you get.

- Warren Buffet



## MARKET PULSE

### INDIAN INDICES

NAME	CMP	NET CH.	%
SENSEX	25958	+182	+0.71
NIFTY	7883	+52	+0.67

### INDIAN ADR'S

SYMBOL	CLOSE	GAIN/ LOSS %
DRREDDY	49.74	-0.02
HDFCBANK	57.19	-1.35
ICICIBK	8.08	-1.46
INFY	16.17	-0.43
TATAMOTOR	30.00	-0.33
WIPRO	11.78	-1.51

### FII AND MF ACTIVITY

SYMBOL	In Crs.
FIIs Eq (Provisional)	-398.10
FIIs Index Future	-307.25
FIIs Index Options	1278.45
FIIs Stock Future	-745.32
FIIs Stock Options	55.37
DII's Eq (Provisional)	948.98

### CURRENCY

RBI RATE	26-NOV-2015
RUPEE - \$	66.5507
EURO	70.6968
YEN 100	54.3000
GBP	100.6446

## MARKET PULSE

### GLOBAL INDICES

NAME	CMP	NET CH.	%
DOW	17813	Unch	Unch
NASDAQ	5116	Unch	Unch
NIKKEI	19894	-49	-0.25
HANG SENG	22288	-200	-0.89
SGX NIFTY	7928	-5	-0.06

### WORLD COMMODITIES

FUTURE	U\$\$	CHANGES
CRUDE	42.55	-0.49
NATURAL GAS	2.242	-0.057
GOLD	1068.4	-1.3
SILVER	14.150	-0.025
COPPER	2.0850	+0.0360

### WORLD EVENTS

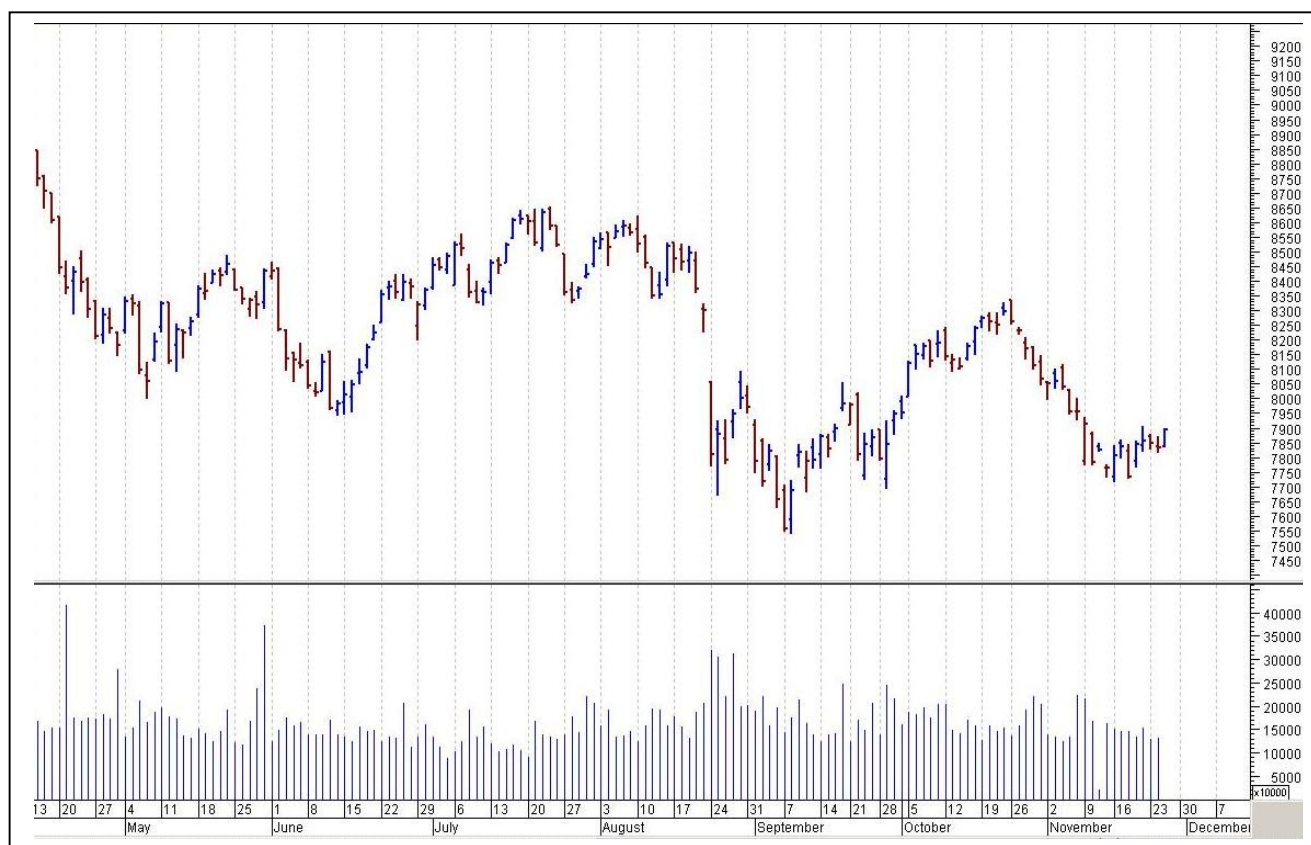
- US:NIL
- UK:Second Estimate GDP q/q
- Prelim Business Investment q/q

## TOP STORY

- Ashok Leyland wins contract for 3600 vehicles worth \$200mln from govt of Ivory Coast funded by EXIM bank.
- Telenor emerges as frontrunner to snap Videocon's 4G spectrum likely to be valued at ` 3500 cr
- Ultratech closing in on R-Infra's cement units. Concerned units likely to fetch enterprise value of ` 5000-5500 cr
- Fortis Health To Acquire Religare Health Trust Trustee Manager For \$14.9 m
- RBI Raises Loan limit for short term MFI loans to 30,000 From 15,000
- Welspun Corp Wins Order For Supply Of 216 K MTs Line Pipes In America
- Heineken Buys 415,000 Shares Of United Breweries At ` 951.5 /Sh
- Edelweiss Group Partners With Sun Global UK To Expand Fixed Income Reach In International Markets



## NIFTY CHART



## MARKET COMMENTARY

Boisterous benchmarks showcased an enthusiastic performance on November F&O series expiry session, by rallying over half a percentage point. Sentiments remained up-beat since start as key bourses made a positive opening and there appeared not even an iota of profit booking in the session as the benchmarks managed to fervently gain from strength to strength as investors continued hunt for fundamentally strong stocks. Frontline indices not only ended the session near intraday high levels but also hit their highest level in over two weeks, recapturing their crucial 7,850 (Nifty) and 25,950 (Sensex) bastions as investors took to hefty across the board buying. For today's trade Nifty likely to trade in the range between 7925 – 7945 in the upper side and 7865 – 7850 in the lower side.

### MARKET LEVELS

	CMP	SUPPORT LEVELS				RESISTANCE LEVELS			
NIFTY	7883	7865	7850	7820	7795	7925	7945	7965	7995
USDINR	66.93	67.05	67.15	67.25	67.3	66.85	66.7	66.65	66.5





### FUTURES CORNER

SCRIPS	CLOSE	SUPPORT	TARGET		REMARKS
		STOP LOSS	T1	T2	
ADANIENIT	82.4	81	84.5	86.8	TRADING CALL
DLF	113.25	112	115.5	118	TRADING CALL
BATAINDIA	514.75	509	524	528	TRADING CALL

### EQUITY CORNER

SCRIPS	CLOSE	SUPPORT	TARGET		REMARKS
		STOP LOSS	T1	T2	
IZMO	73.1	71	76	78	TRADING CALL
GENUSPOWER	40.45	39.1	43	45.8	TRADING CALL

### DELIVERY BASED CALL / INVESTMENT CALL

SCRIPS	CMP	SUPPORT	TARGET		REMARK
		STOP LOSS	T1	T2	

### BULK DEALS (BSE)

SCRIP	CLIENT NAME	BUY/SELL	QUANTITY	PRICE
HELIOSMATH	STATE BANK OF TRAVANCORE	S	141,527	9.55
MANAPPURAM	SMALL CAP WORLD FUND INC	S	8,550,000	22.3

### BULK DEALS (NSE)

SCRIP	CLIENT NAME	BUY/SELL	QUANTITY	PRICE
HEROMOTOCO	MORGAN STANLEY ASIA (SINGAPORE) PTE	BUY	1690000	2590
HEROMOTOCO	BC INDIA PRIVATE INVESTORS II	SELL	2750000	2591.25
PTC	CITIGROUP GLOBAL MARKETS MAURITIUS PVT LTD	SELL	2064000	66.61

### SCRIP'S IN F&O BAN

(To resume for normal trading below 80% of market wide limit required)

NIL



## NEWS & RUMOURS:

- Gold (Spot Dollar) major support = \$1047/\$1020 & Resistance = \$1098/\$1125.
- Crude oil range->\$38 to \$48.
- Metals Rally on Chinese Support, Boosting Stocks; Aussie Slides: - Signs China is moving to prop up metals prices boosted aluminum to zinc, helping to fuel a second day of gains in European equities.
- Copper jumped as much as 4.2 percent and aluminum rose the most since early October, pushing up miners on the Stoxx Europe 600 Index for the first time in five days. Automakers led the gauge higher as the euro slipped toward a seven-month low, boosting export prospects. While emerging-market stocks climbed for the first time this week, rising metals prices failed to support currencies of raw-material-producing nations.
- Euro on shaky ground as ECB easing talk mounts, stocks up: - The euro slipped back towards seven-month lows, bond yields fell and European shares gained on Thursday as talk of aggressive stimulus from the European Central Bank next week grows.
- Gold futures little changed; U.S. markets closed for Thanksgiving: - Gold prices were little changed on Thursday, as trading conditions remained thin with markets in the U.S. closed for the Thanksgiving Day holiday.
- U.S. gas futures extend losses as record-high stockpiles weigh: - U.S. natural gas futures extended losses from the prior session on Thursday, as market players continued to focus on healthy stockpiles of the fuel.
- Dollar holds at 8-month highs in light trade: - The dollar held steady at eight-month highs against the other major currencies on Thursday, as trading volumes were expected to remain thin with U.S. markets closed for the Thanksgiving holiday.

## TRENDS & OUTLOOK – DATE: 27- Nov- 2015

### PRECIOUS METALS:

COMMDITY (MCX)	S2	S1	PIVOT POINT	R1	R2
GOLD (Dec)	24820	25025	25270	25566	25810
SILVER (Dec)	32000	33100	34070	35366	36036

### BASE METALS

COMMDITY (MCX)	S2	S1	PIVOT POINT	R1	R2
COPPER (Nov)	294	299	305	312	318
ZINC (Nov)	102.30	104.20	106.45	109.60	112.30
LEAD (Nov)	104.20	106.70	109.20	111.45	113.25
NICKEL (Nov)	569	590	606	624	648

### ENERGY

COMMDITY (MCX)	S2	S1	PIVOT POINT	R1	R2
CRUDE OIL (Dec)	2691	2766	2870	2966	3036
NATURAL GAS (Dec)	142	147	152	158	165

### DATE TALKS : TODAY'S ECONOMIC DATA :

Second Estimate GDP of GBP, Prelim Business Investment, GfK German Consumer Climate.



**Registered Office**

Indira House, 3rd Floor, 5 Topiwala Lane,  
Opp. Lemington Road Police Station, Grant Road (East), Mumbai - 400007.

**Corporate Office**

'Ramavat House' E-15, Saket Nagar, Indore - 452018 (M.P.)

**Customer Care**

Tel: +91-731-4097170/ 71/ 72/ 73/ 74 M. +91 93031 72345

Email: [customercare@indiratrade.com](mailto:customercare@indiratrade.com) [www.indiratrade.com](http://www.indiratrade.com)



**INSTITUTIONAL DEALING UNIT**

Africa House, 5, Topiwalla Lane, Lamington Road, Mumbai, 400007

Tel: +91 22 30080678 Fax : +91 22 23870767 Email : [ie@indiratrade.com](mailto:ie@indiratrade.com)

**Disclaimer**

This report is for private circulation within the Indira Group. This report is strictly confidential and for information of the selected recipient only and may not be altered in any way, transmitted to, copied or distributed, in part or in whole, to any other person or to the media or reproduced in any form. This report should not be construed as an offer or solicitation to buy or sell any securities or any interest in securities. It does not constitute a personal recommendation or take into account the particular investment objectives, financial situations, or any such factor. The information, opinions estimates and forecasts contained here have been obtained from, or are based upon, sources we believe to be reliable, but no representation of warranty, express or implied, is made by us to their accuracy or completeness. Opinions expressed are our current opinions as of the date appearing on this material only and are subject to change without notice.